

# Wabush Airport Parallel Taxiway and Apron Expansion



Client: Transport Canada



Date: Thursday, September 21, 2017



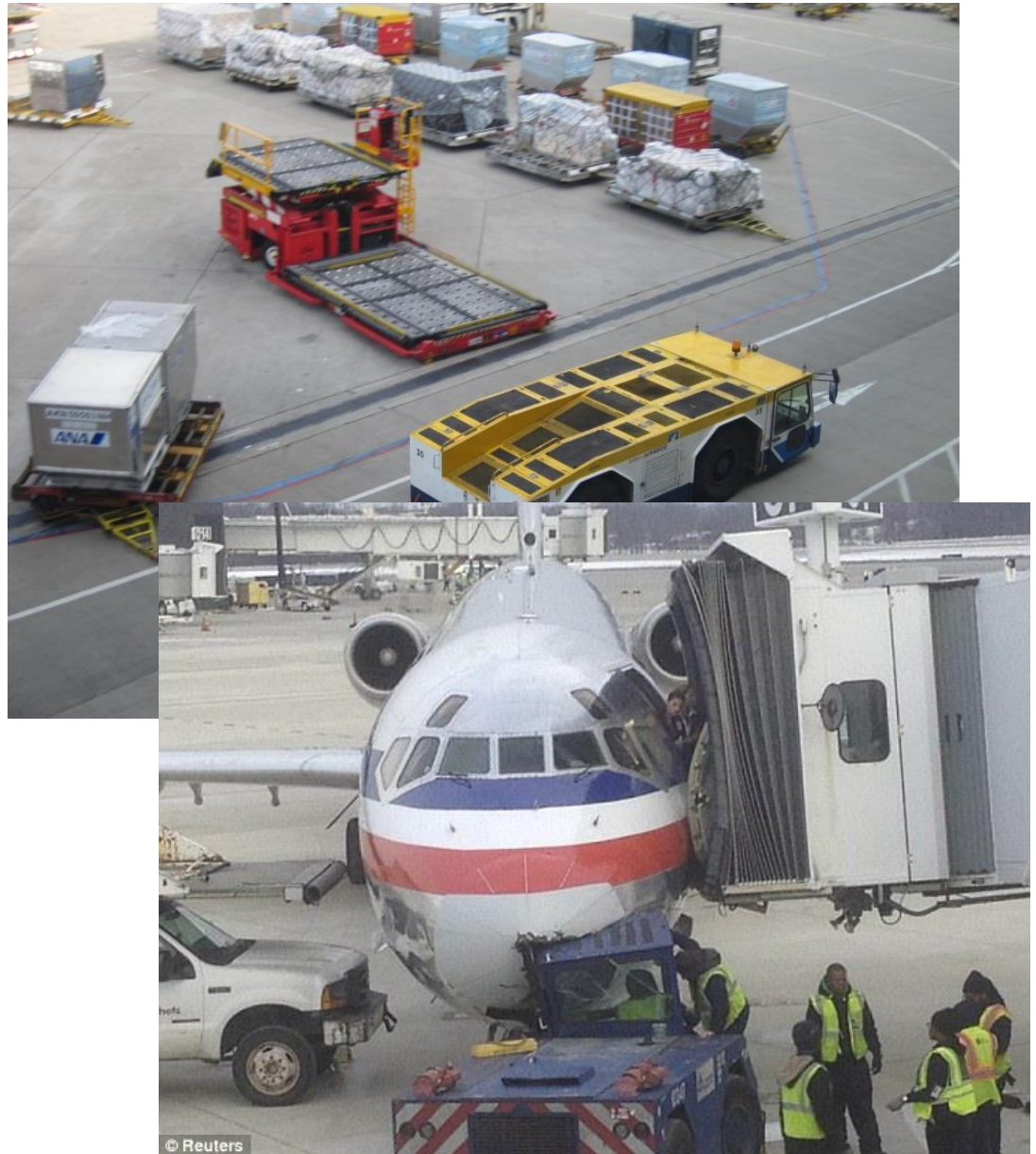
At Stantec, safety is more than just a buzz word. It's part of how we do business, every single day.



## A “Close Call”

People may not realize it but there are just as many hazards at an airport as there are on a busy street.

Be aware of your surroundings. Especially at an airport.



# Agenda

**1** History of the Wabush Airport

**2** Purpose for the Project

**3** Year 1 - 2015: The Design

**4** Year 2 – 2016: Construction Phase 1

**5** Year 3 – 2017: Construction Phase 2

**6** Closing remarks



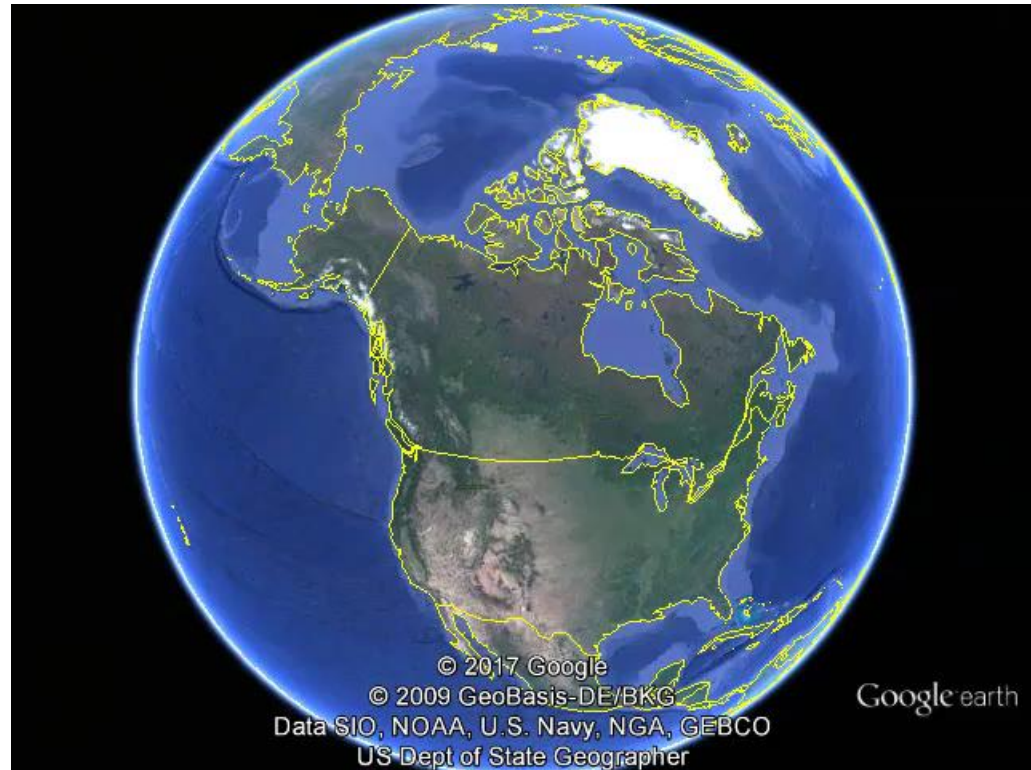
# 1 History of the Wabush Airport

If you build it they will come



The original airport terminal, 1961.

# Labrador West



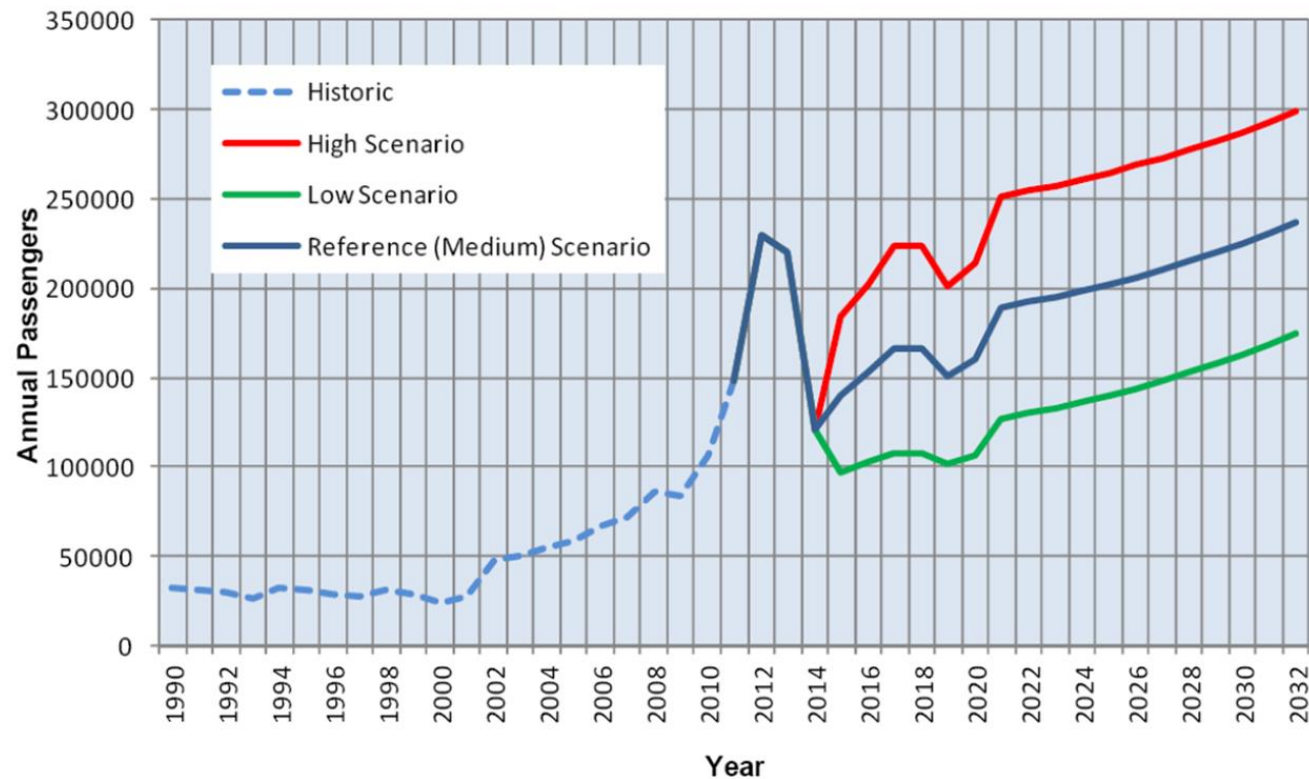
## Early Exploration

- Explored by AP Low in 1896
- Railway connection to Sept-Iles in the 1950's
- Labrador City began as the temporary worker camp in 1960
- District of Labrador City and the Original Airport Terminal 1961

# 2 Purpose for the Project

## Aviation forecasts

Passenger Activity Forecast – High, Medium (Reference) and Low Scenarios





# Previous Constraints

- The lack of a parallel taxiway for Runway 18-36 leads to operational inefficiencies because aircraft are required to backtrack, which in turn creates operational delays
- The terminal apron cannot accommodate peak aircraft parking demands from air carriers and general aviation operators



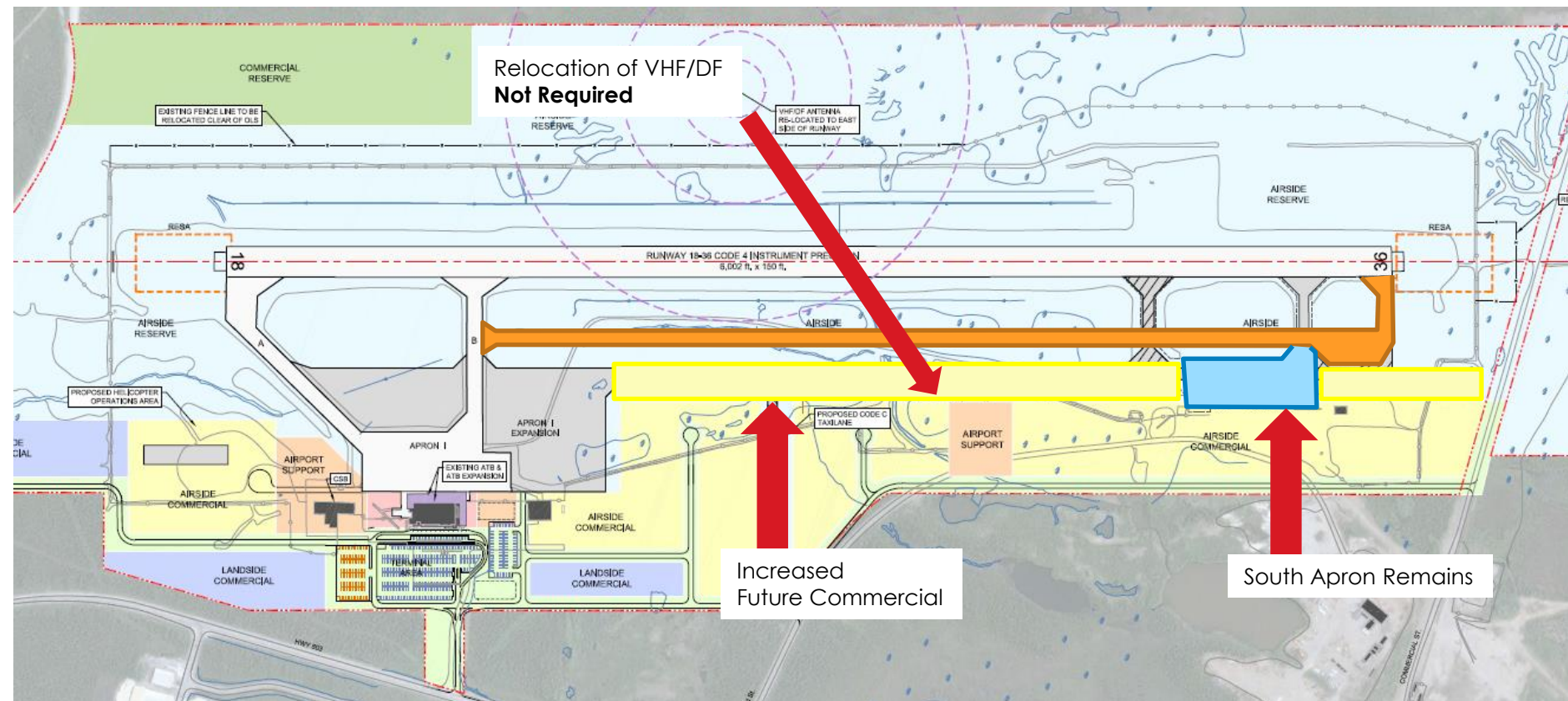
- Poor Drainage





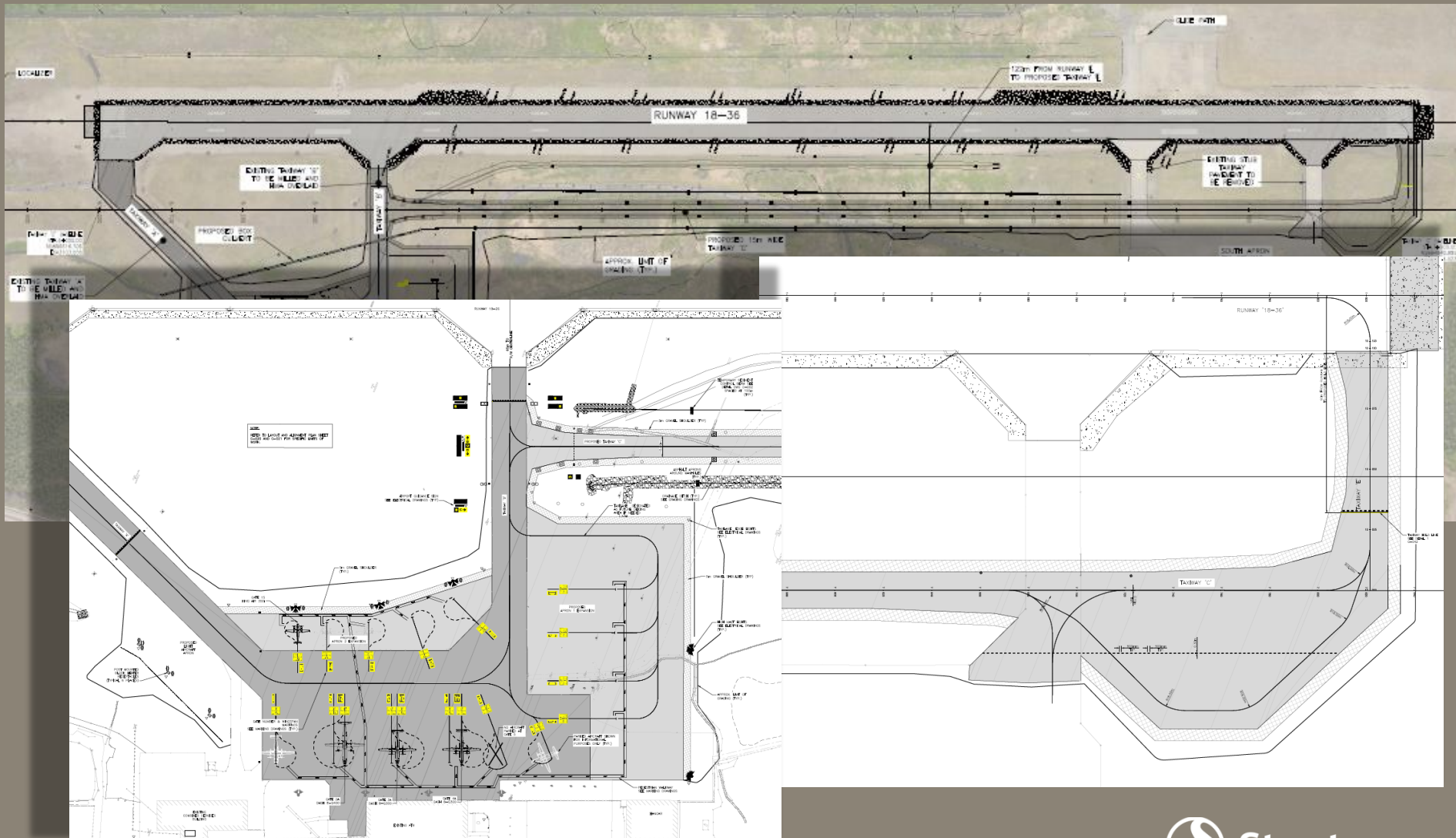
# 3 Year 1 - 2015: The Design

- TP312 4<sup>th</sup> to 5<sup>th</sup> Edition





- Site Plan



- 3D Modelling



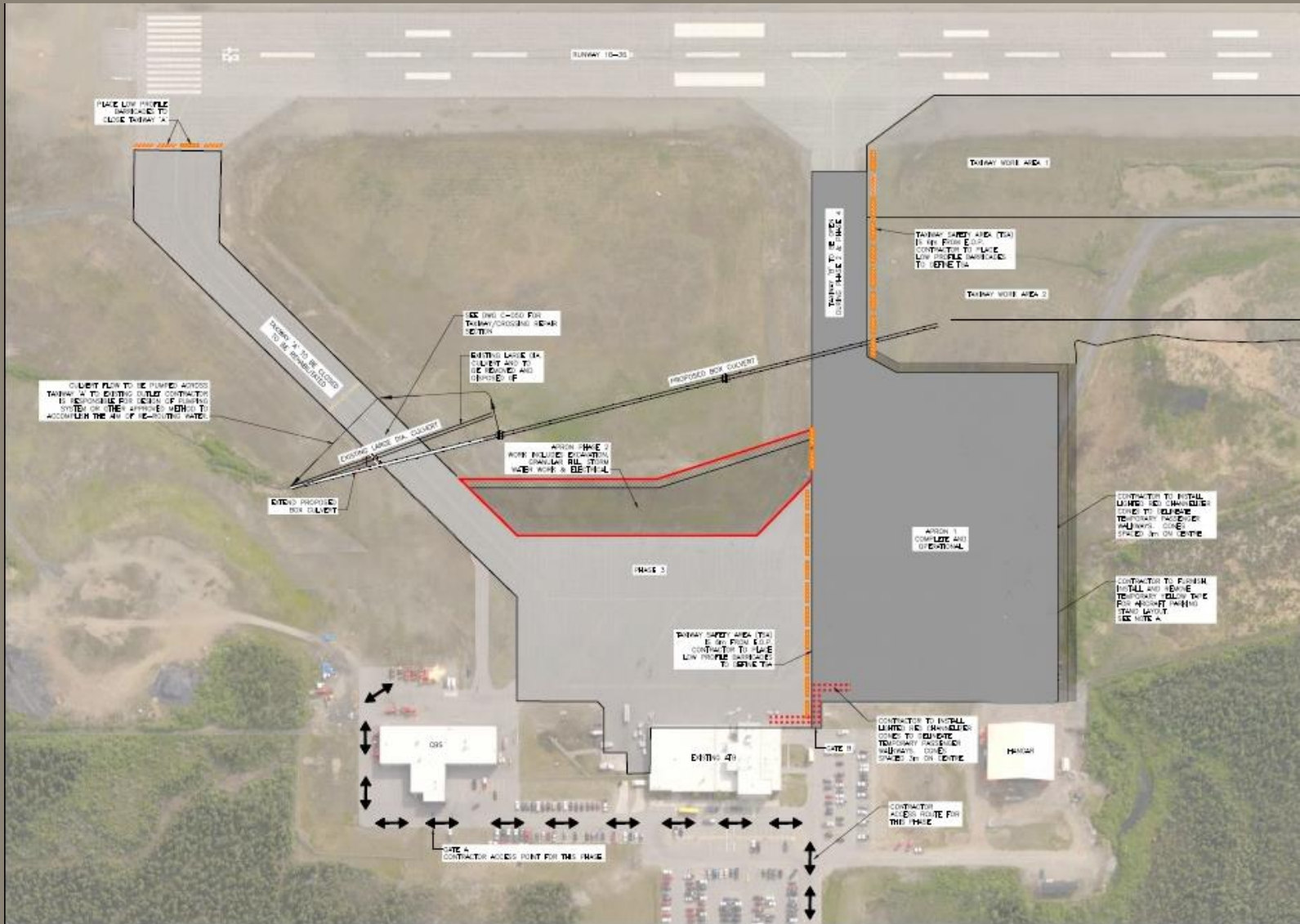




- Phasing

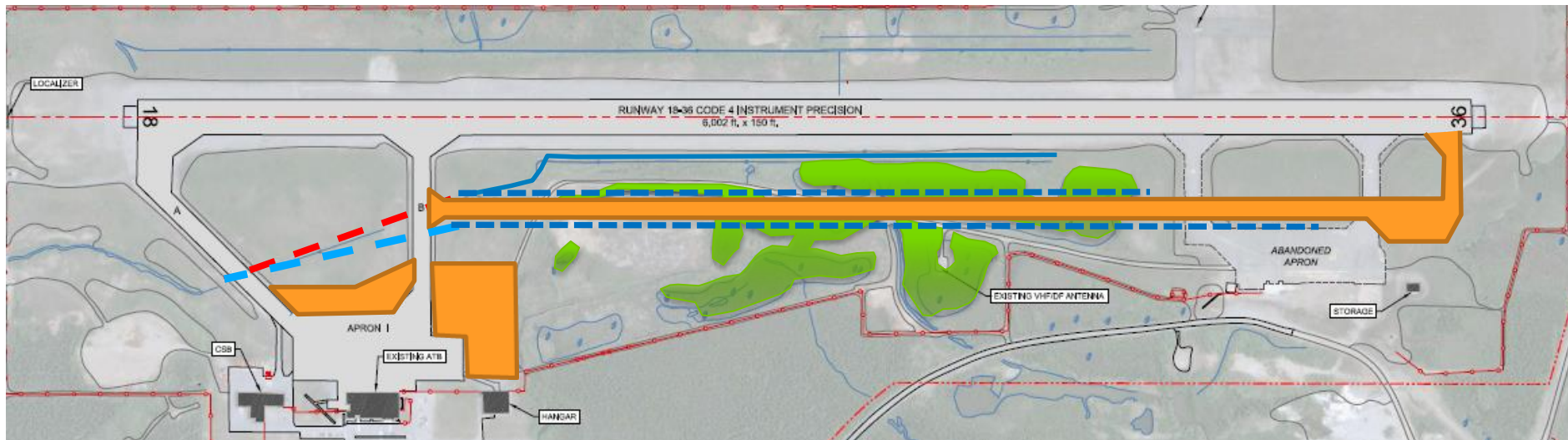


- Phasing



# 4 Year 2 – 2016: Construction Phase 1

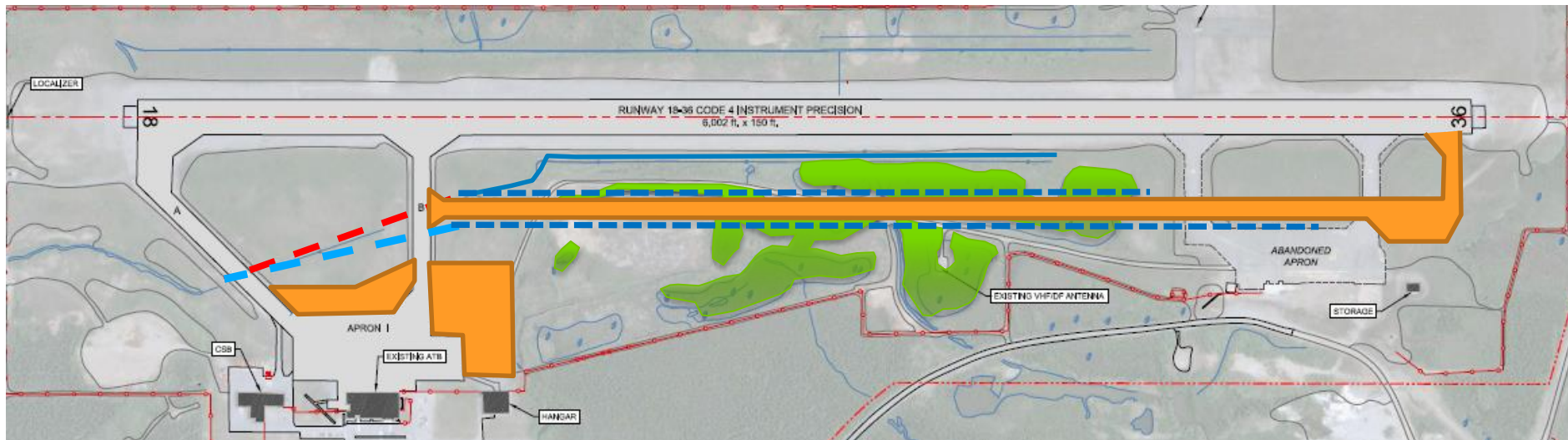
- Site preparation and Drainage Improvements



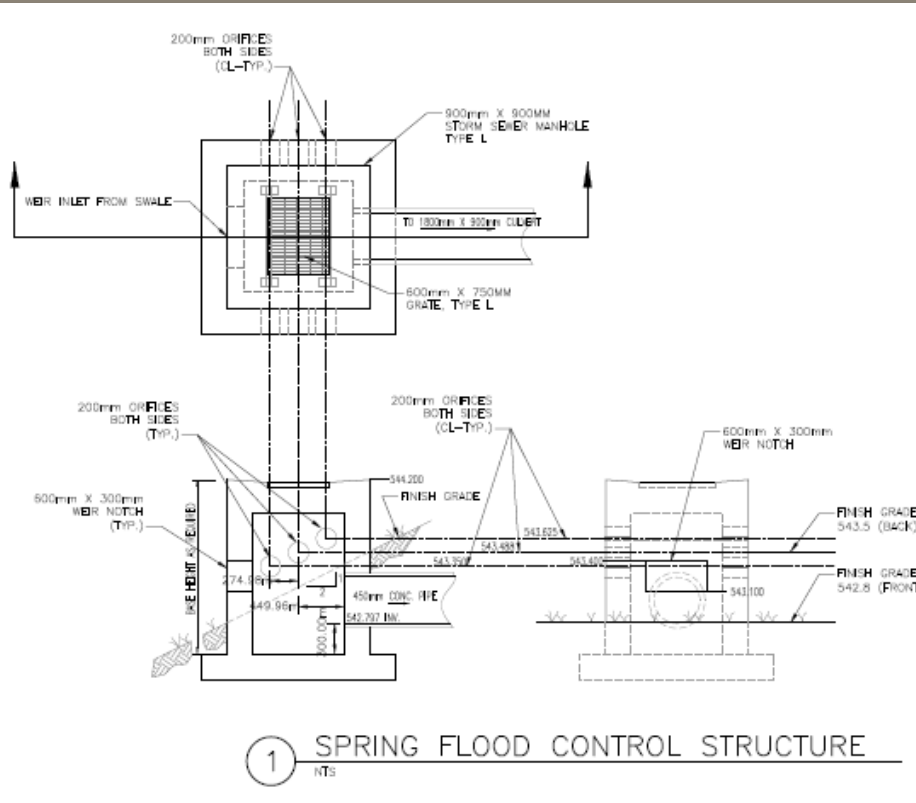


# 4 Year 2 – 2016: Construction Phase 1

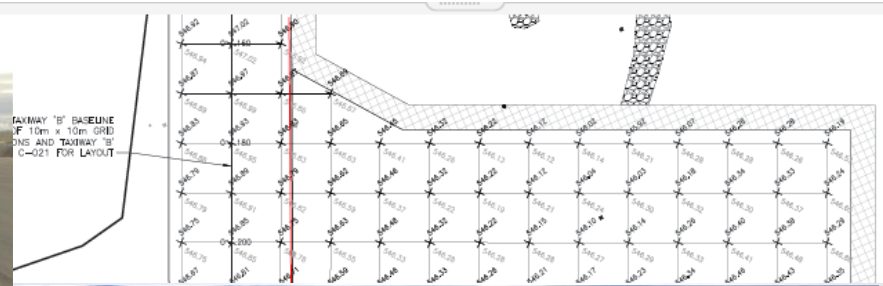
- Site preparation and Drainage Improvements



- Culvert Replacement



- Apron Expansion





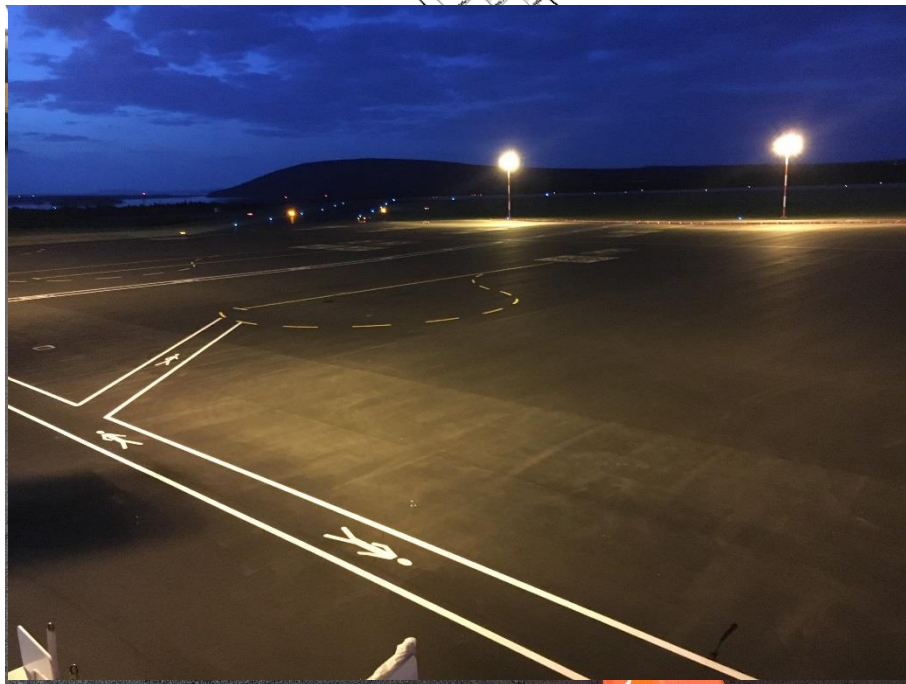
- New Parallel Taxiway Charlie





# 5 Year 3 – 2017: Construction Phase 2

- Rehabilitation of Existing Apron and Taxiway Alpha



③ TYP. PAVEMENT SECTION – APRON & TAXIWAY HMA REHABILITATION

- New Parallel Taxiway Charlie





- Airfield Electrical



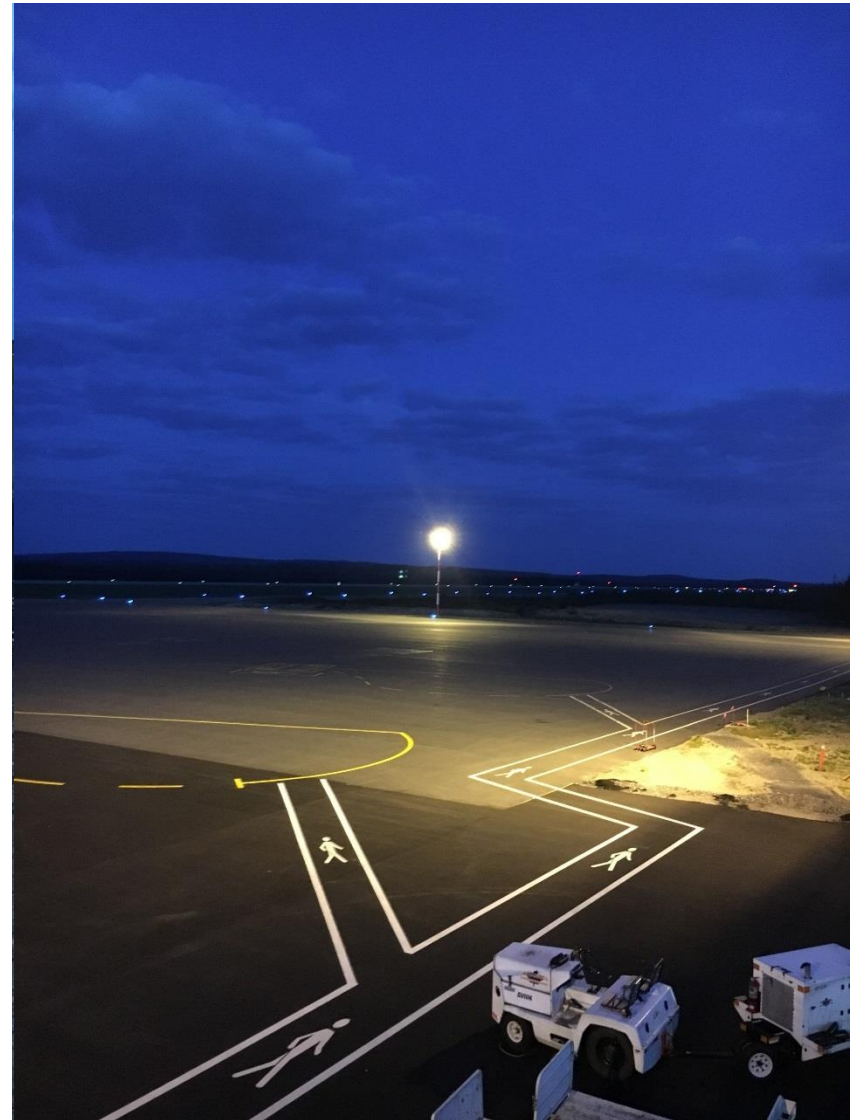


- Airfield Electrical





- Airfield Electrical





# 6 Closing Remark – The Finish Line



# Special Thanks!!!



Stantec



Transport  
Canada

Canada



Public Works and  
Government Services  
Canada



Dexter Construction Company Limited



SEGUIN  
MORRIS

# Questions???

