



# Integration of AI Technology in Airfield Pavement Management

**Carmen Yu, P.Eng**

September 18, 2024



# Part I – Case Study at the Calgary International Airport

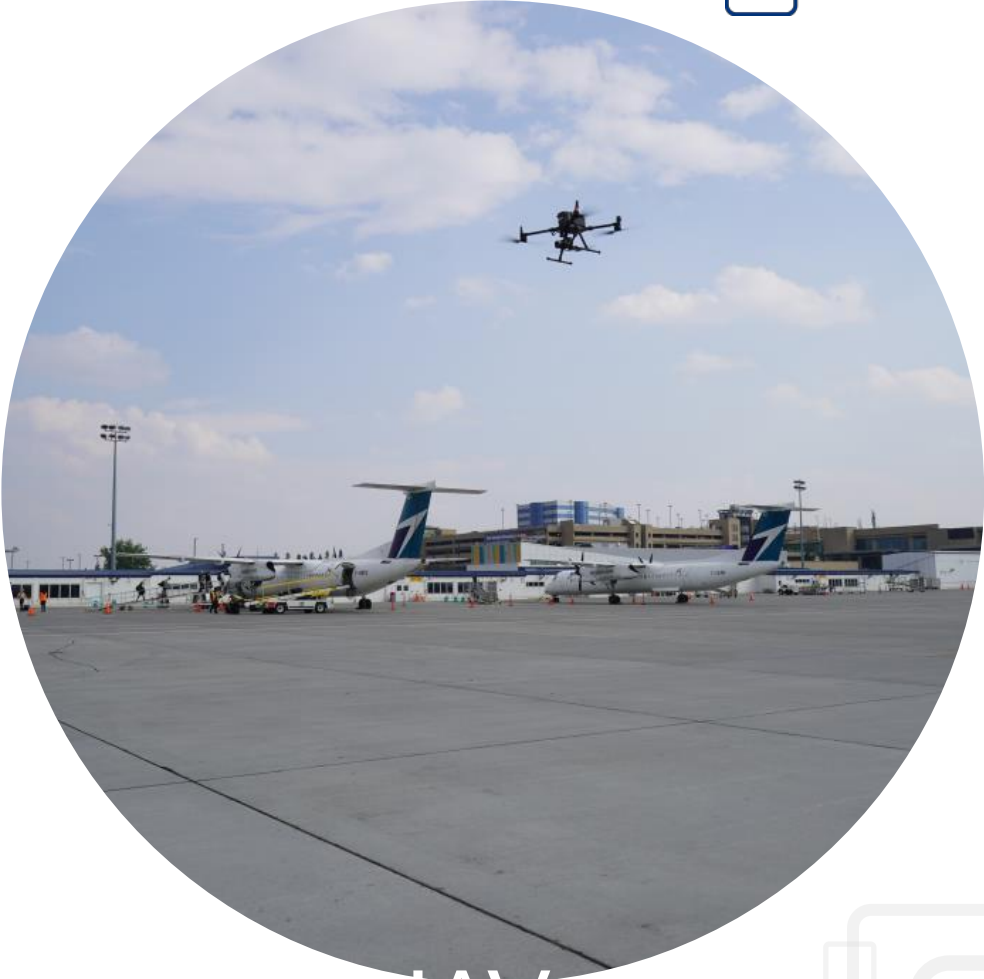




Approx.  
3 million m<sup>2</sup>  
of Airfield  
Pavement

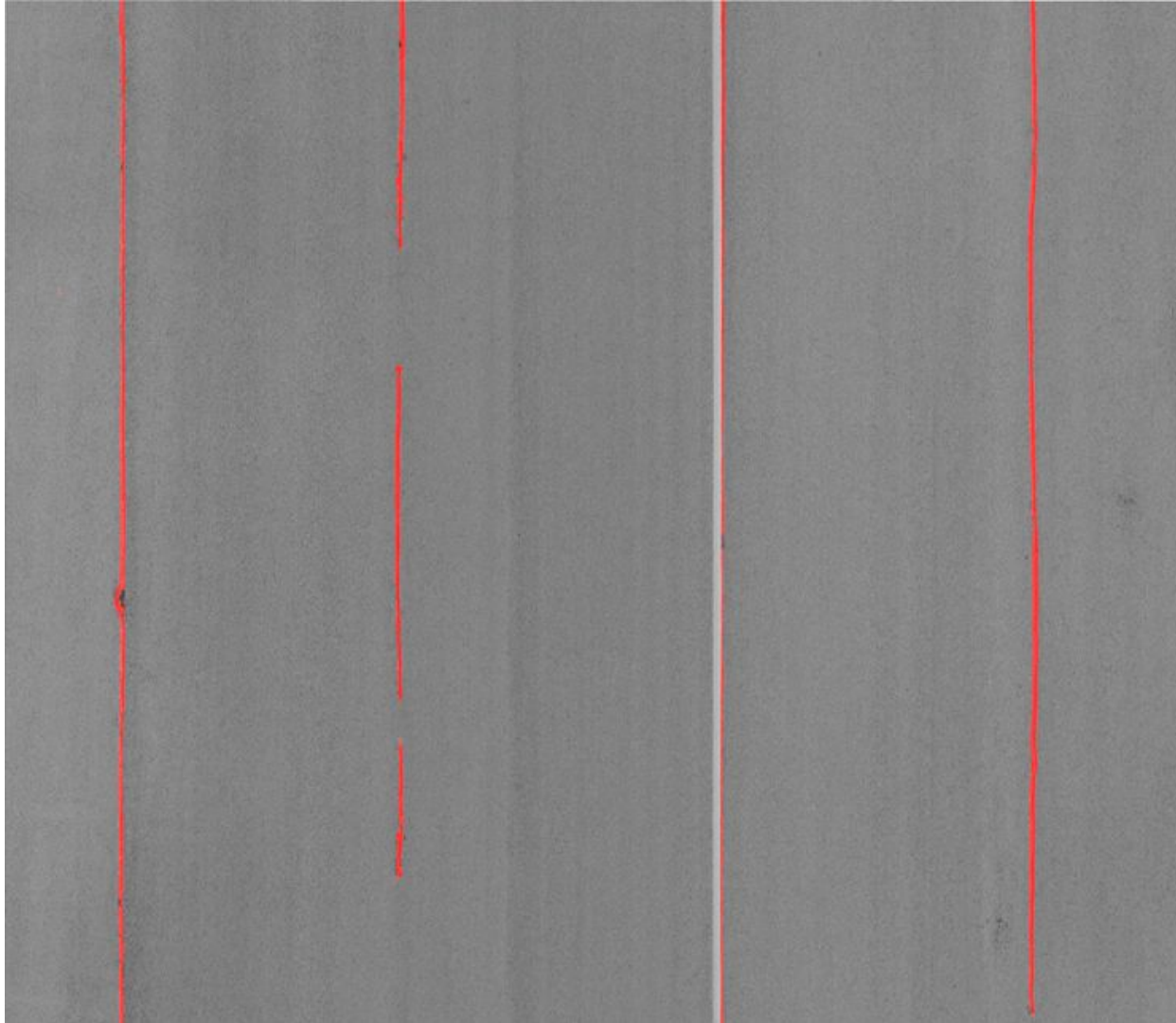


Manual - 20  
days



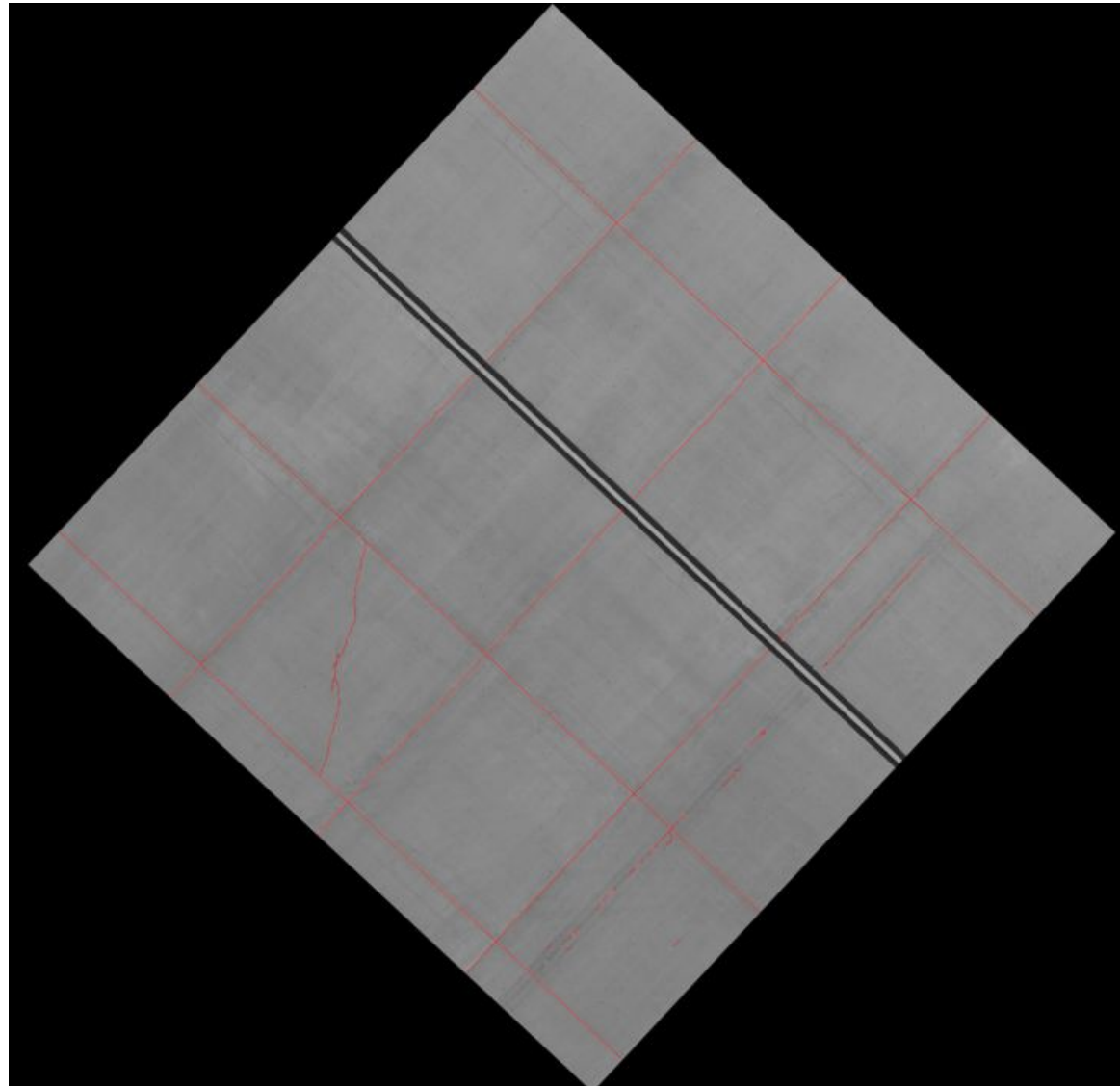
UAV - 0  
days

# AI Crack Detections

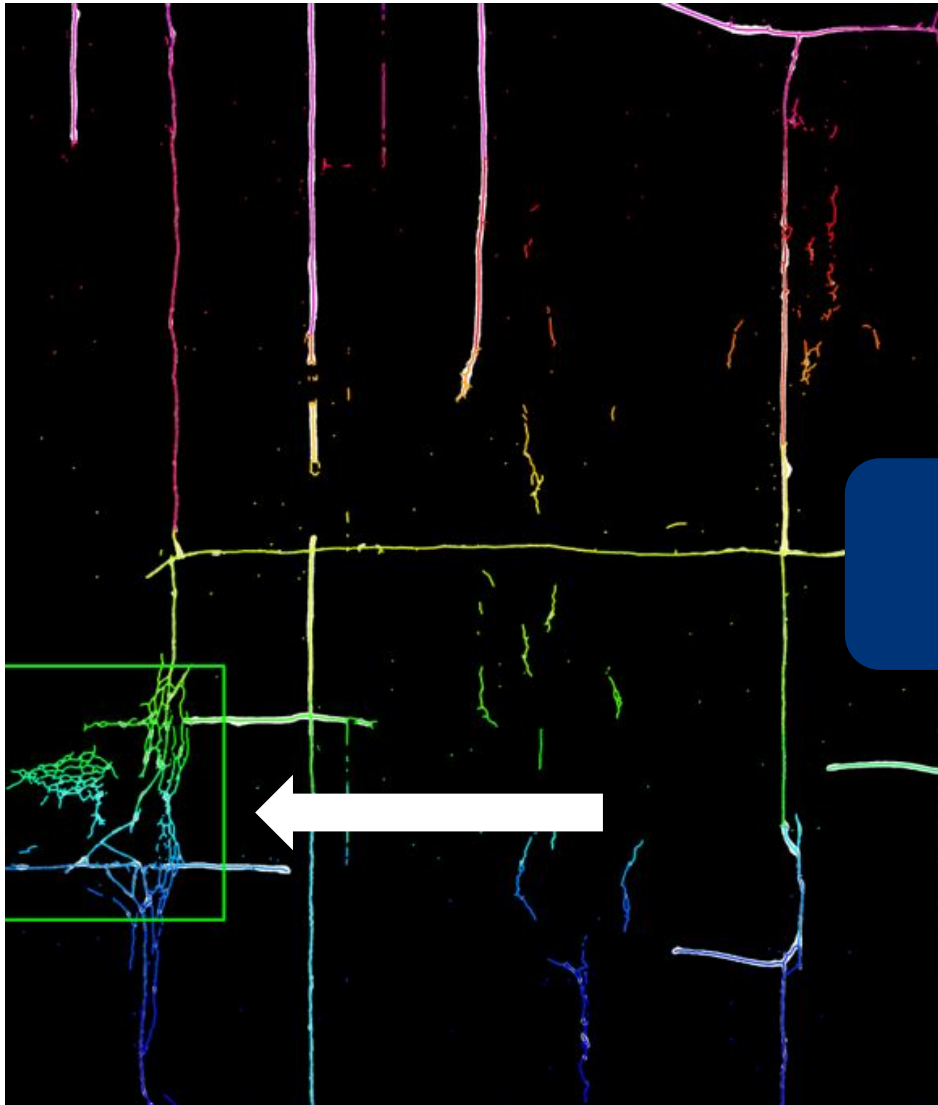


Manually measured:  
117m  
AI Detection: 104m

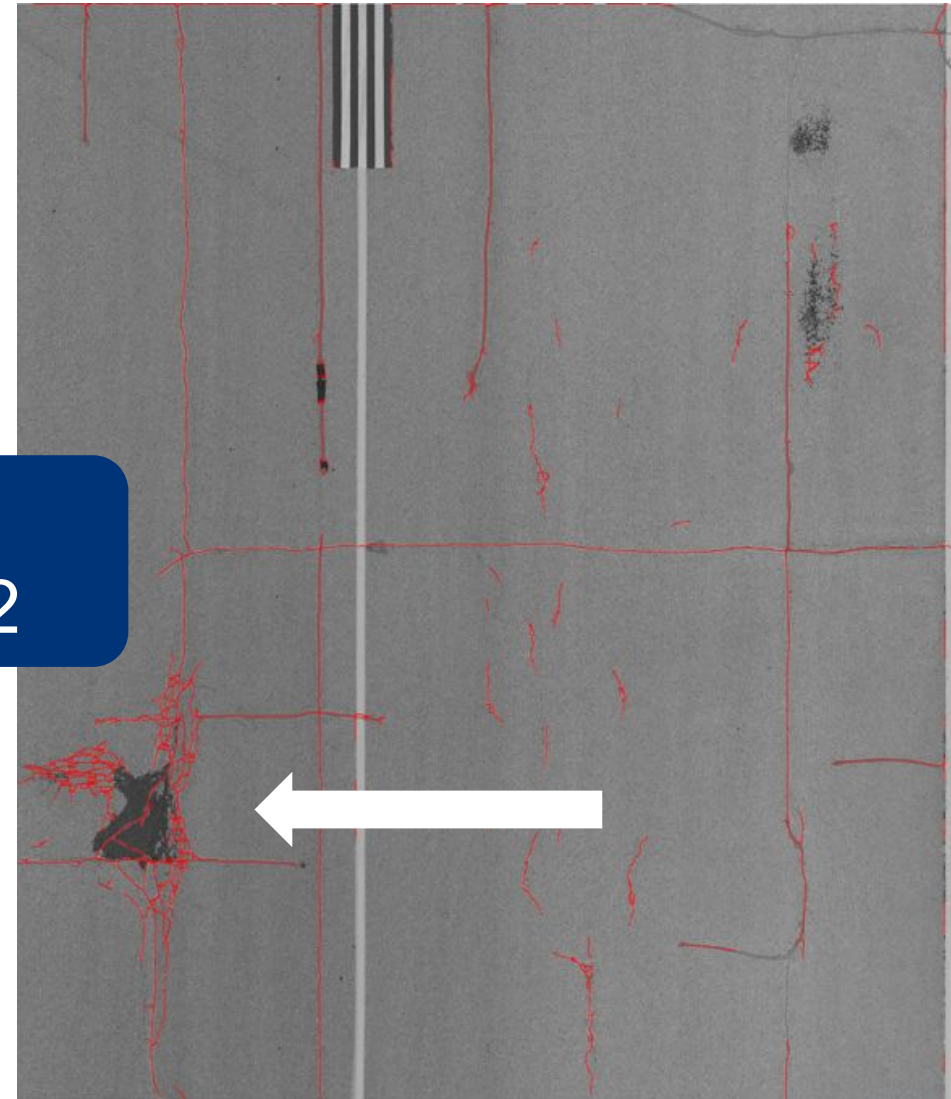
# AI Crack Detections

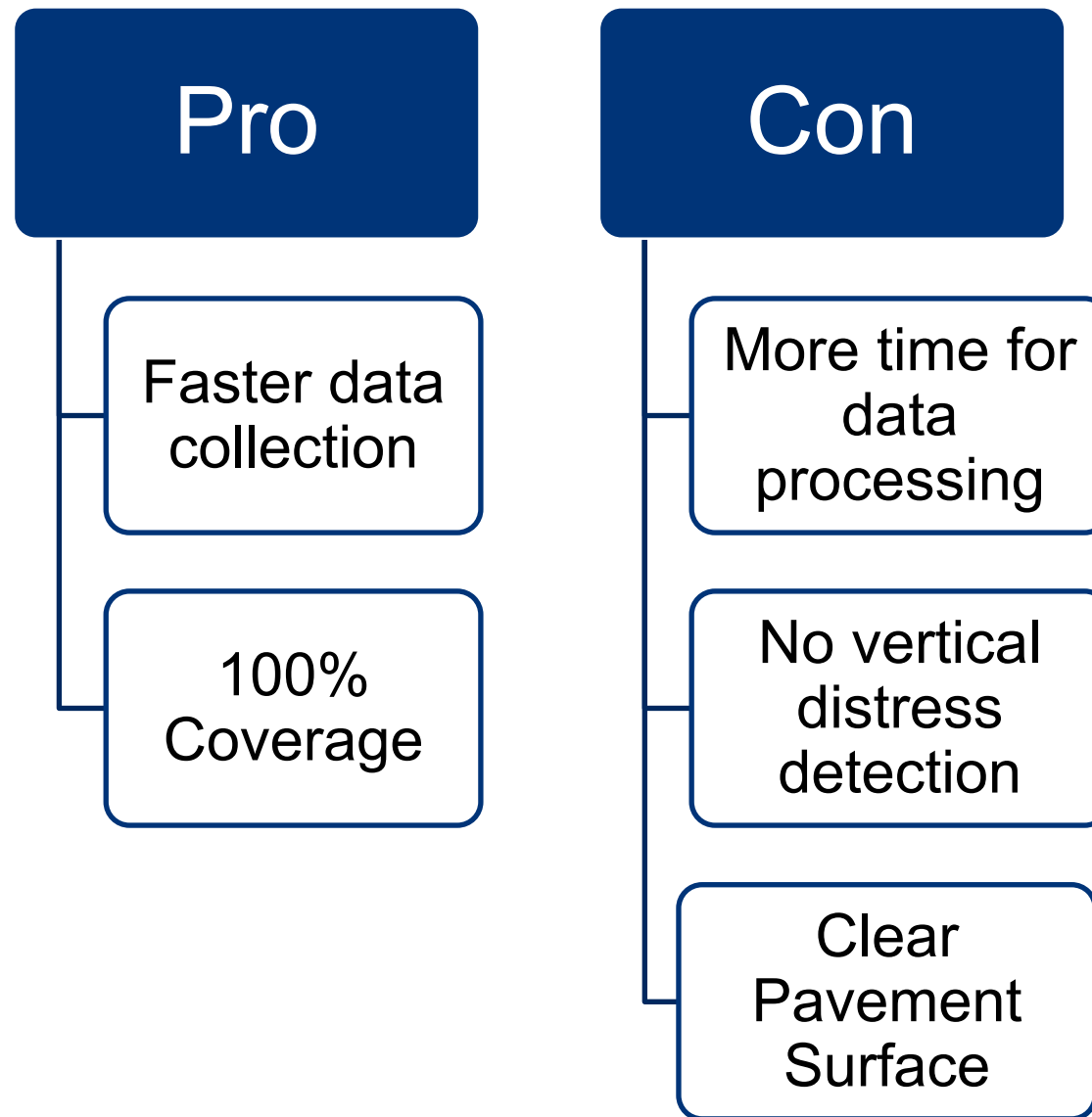


# AI Crack Detections



Area:  
19.4m<sup>2</sup>





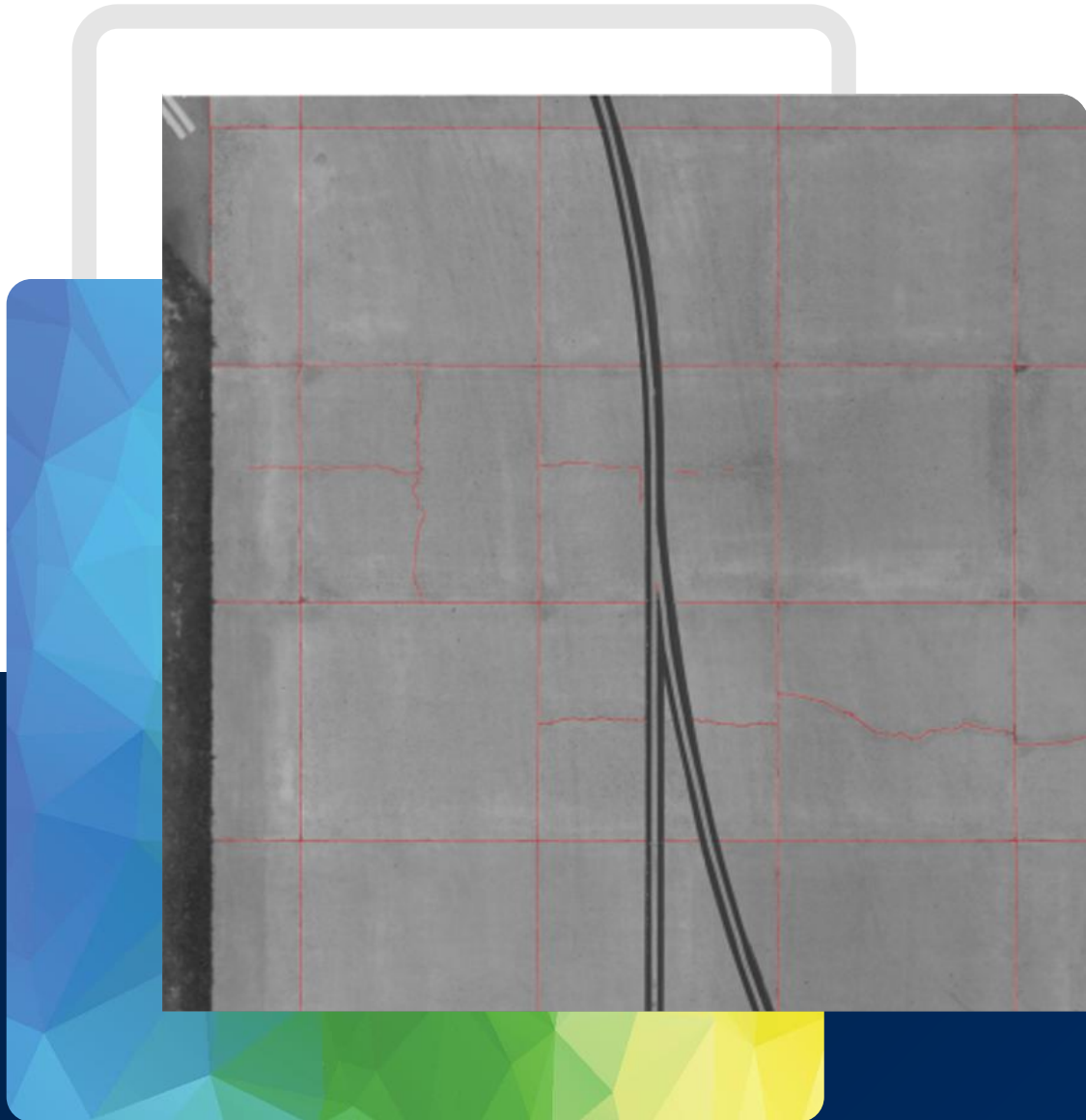


# Challenge



# Part II – Additional Applications





***“Monitor for changes”***

Comparative Analysis



***“Cracks should be sealed to prevent future deterioration”***

Quantify Lengths



## ***“Ongoing Regular Maintenance”***

Centralized Data with a Collaborative Platform

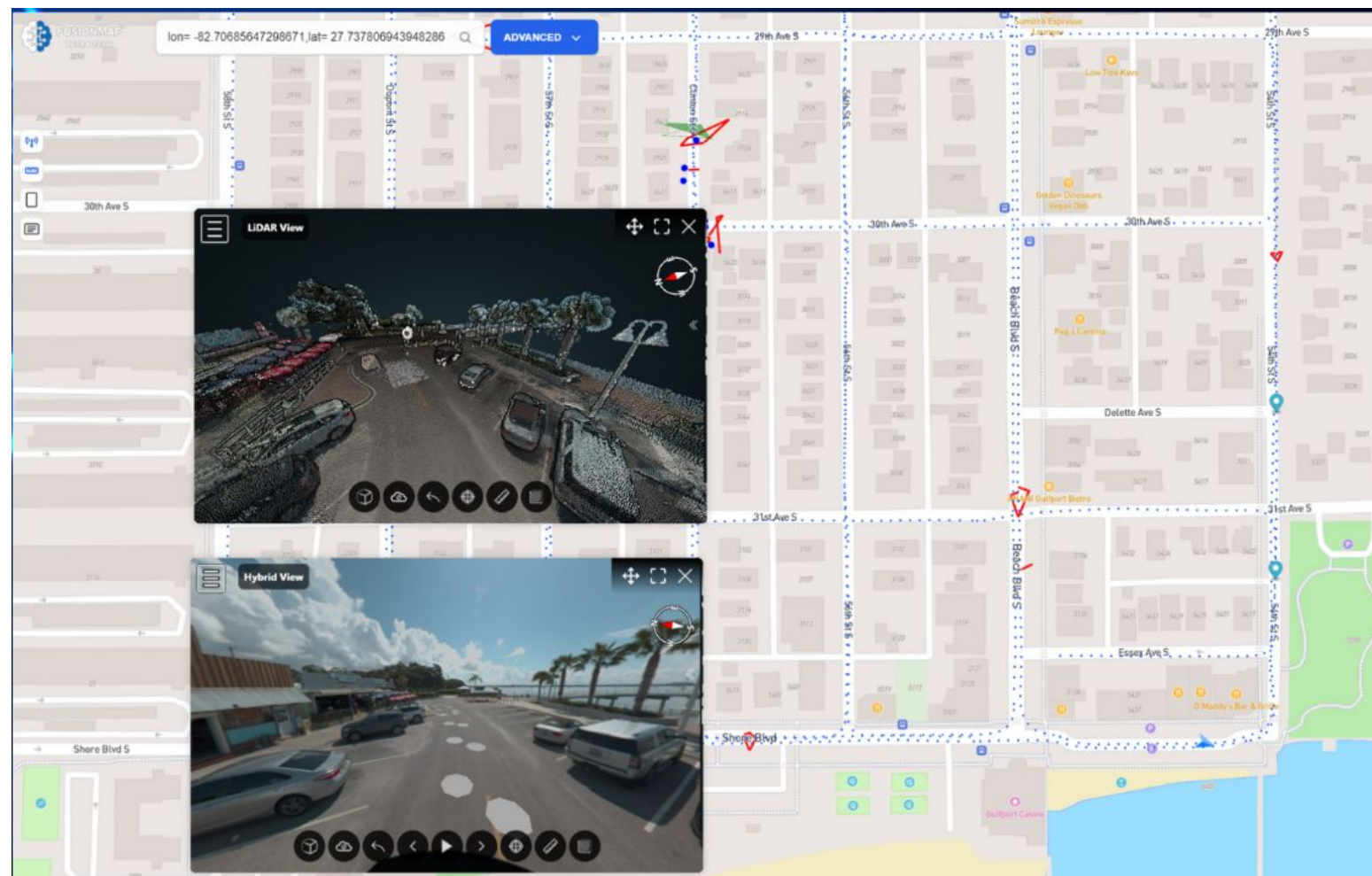


AI-powered geospatial data visualization, asset extraction, and management with seamless GIS integration





Video to 3D Model



Map Interface

Capital  
Improvement  
Plan

Aircraft  
Movement

Maintenance  
Activities



FusionMap<sup>®</sup>

Pavement  
Structures